

amer  
—YACHTS—



The Amerio family

## **The Amerio family and the passion for the sea**

---

Founded in 1973, in Sanremo, Italy, by Fernando Amerio, Permare started by providing marine services to growing number of customers in the Italian and French Riviera.

Today it is a family-run business with three generations, the founder Fernando Amerio, his children Barbara and Rodolfo, with a third generation already operating.

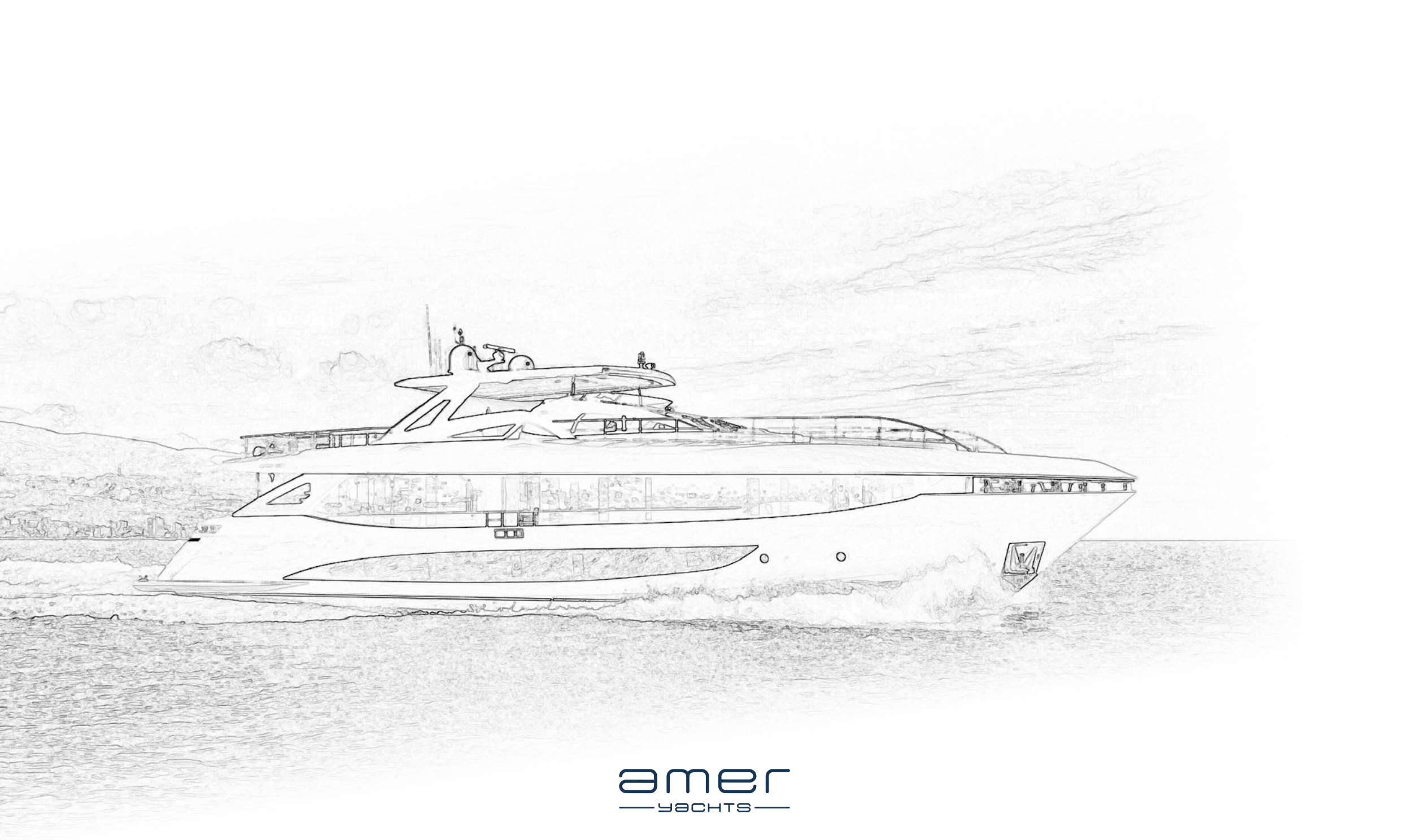
In the early 90s, the Shipyard Permare, after being also retailer and manufacturer for other Italian shipyard, begins the construction of yachts under its own brand "Amer Yachts", that over the years will become a synonymous of quality.

Today Permare builds, in Viareggio and Pisa, Amer Yachts composite models up to 120 feet and steel "Amer Steel" line models up to 70 meters and also offers refit and aftersales services in San Remo and Imperia.

Alongside the Permare shipyard there are other companies in which the Amerio family has a stake, covering a full range of nautical services, refitting and conservative restoration shipyards such as "Sanremoship", the "Cantieri del Mediterraneo", the "Cantieri del Ponente" and a maritime brokerage.

Through its maritime brokerage company the shipyard can also boast a brokerage department for the sale of used boats and a charter department to offer boats of all sizes to all customers who prefer to rent a boat for their holidays.

The three refitting yards mentioned above cover an area ranging from Sanremo to Imperia and can offer any type of boat services ranging from ordinary maintenance to major refitting work.



amer  
— YACHTS —



amer 350



amer 100-2022



amer 100-2020



amer 100-2020



amer 100-2019



amer 110-2017



amer 120-2023



amer 120-2021

amer  
— YACHTS —

*an authentic italian yacht*

amer 950



















fly deck



main deck



lower deck

SCALA 1 METRO

SCALA 1 METRO

## Dati Tecnici | Technical Data

LOA	27,45 m	LOA
Lunghezza scafo	23,96 m	LWL
Larghezza massima	6,84 m	Max Beam - BH
Motorizzazione	2 x Volvo Penta IPS 1350 013 1000 CV - 753 KW 3 x Volvo Penta IPS 1350 013 1000 CV - 753 KW	Propulsion
Materiale	VTR - GRP	Material
Combustibile	6000 l	Fuel tank
Acqua dolce	1500 l	Water tank
Velocità 2 motori	Cruise 20 ± 1 Kn Max 25 ± 1 Kn	Speed 2 engines
Velocità 3 motori	Cruise 22 ± 1 Kn Max 25 ± 1 Kn	Speed 3 engines
Dislocamento a pieno carico	2 motori / engine 75,5 t 3 motori / engine 83,4 t	Full displacement
Cantiere - Naval Architect	Permare srl	Builder - Naval Architect
Architetto interni / esterni	GANTO studio	Interior / exterior designer

amer  
— YACHTS —



amer  100 - 2022























fly deck



main deck



lower deck

## Dati Tecnici | Technical Data

LOA	29,60 m	LOA
Lunghezza scafo	23,96 m	Length hull
Larghezza massima	7,00 m	Beam
Immersione massima	1,95	Maximum draft
Dislocamento	85 Tons	Displacement
Materiale	VTR - GRP	Material
Motorizzazione	4 x VOLVO PENTA 1200 IPS 662Kw (900hp)	Propulsion
Combustibile	8500 l	Fuel tank
Acqua dolce	2000 l	Water tank
Velocità di crociera	25 ± 1	Cruising speed
Velocità massima	30 ± 1	Top speed

Consumi / Consumption					
	Velocità nodi Speed Kts	RPM	Consumi l/h Consumption l/h	LPM	Autonomia Autonomy
Cr. Economica Economic cruise	9,1 Kn	900	37	4,07	2088
Crociera Cruising	25,3 Kn	2100	501	19,8	429
Massima Max speed	30,2 Kn	2360	649	21,4	397

amer  
— YACHTS —

amer  100 - 2020



















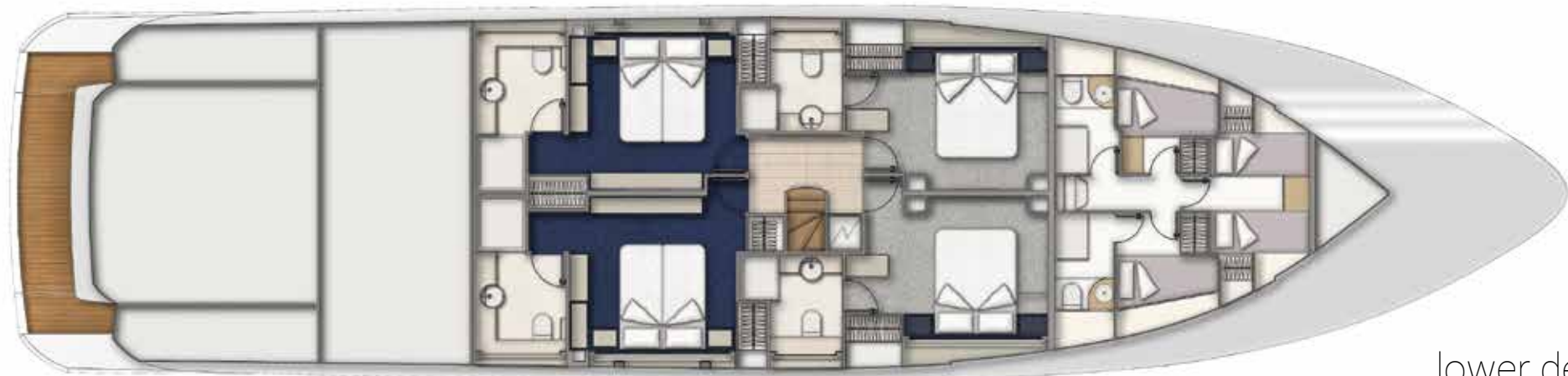




fly deck



main deck



lower deck



## Dati Tecnici | Technical Data

LOA	29,60 m	LOA
Lunghezza scafo	23,96 m	Length hull
Larghezza massima	7,00 m	Beam
Immersione massima	1,95	Maximum draft
Dislocamento	85 Tons	Displacement
Materiale	VTR	Material
Motorizzazione	4 x VOLVO PENTA 1200 IPS 662Kw (900hp)	Propulsion
Combustibile	8500 l	Fuel tank
Acqua dolce	2000 l	Water tank
Velocità di crociera	25 ± 1	Cruising speed
Velocità massima	30 ± 1	Top speed

Consumi / Consumption					
	Velocità nodi Speed Kts	RPM	Consumi l/h Consumption l/h	LPM	Autonomia Autonomy
Cr. Economica Economic cruise	9,1 Kn	900	37	4,07	2088
Crociera Cruising	25,3 Kn	2100	501	19,8	429
Massima Max speed	30,2 Kn	2360	649	21,4	397

amer  
— YACHTS —

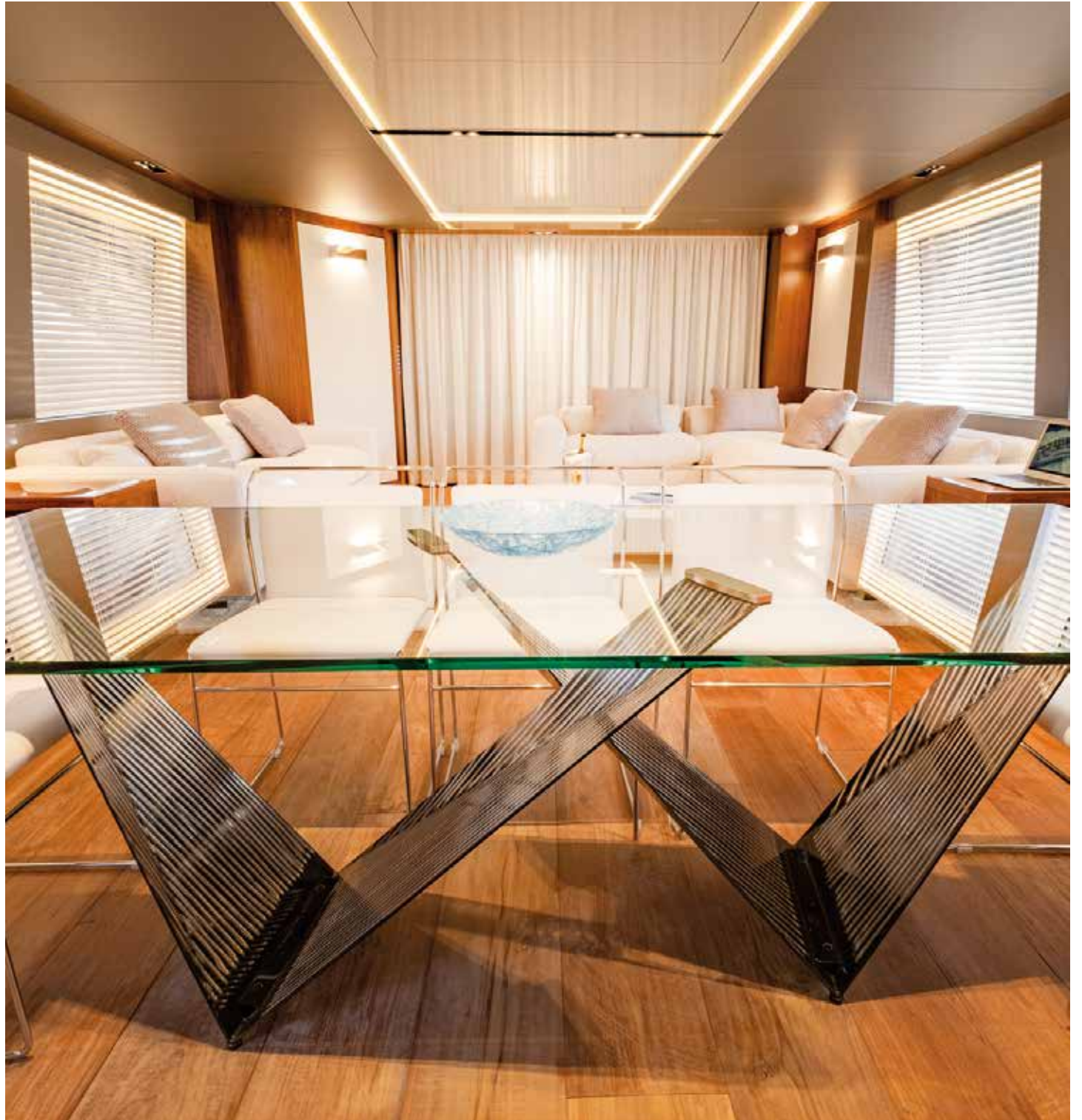
amer  100 - 2020











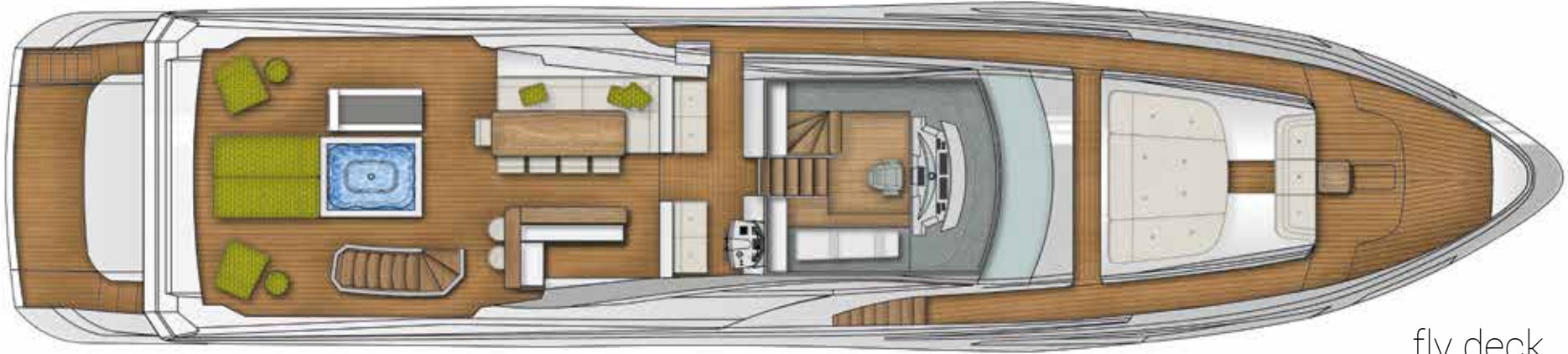








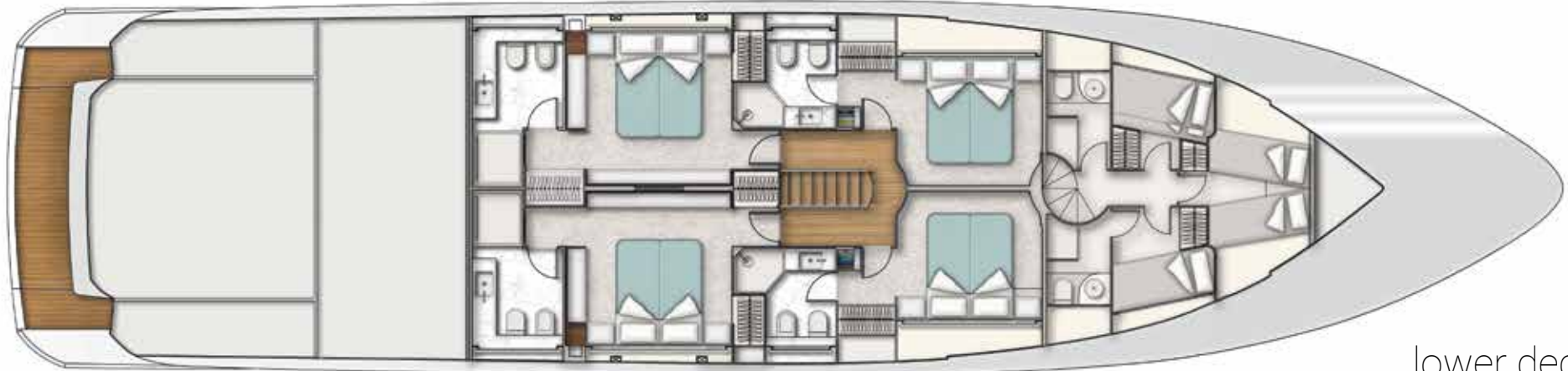




fly deck



main deck



lower deck

## Dati Tecnici | Technical Data

LOA	29,60 m	LOA
Lunghezza scafo	23,96 m	Length hull
Larghezza massima	7,00 m	Beam
Immersione massima	1,95	Maximum draft
Dislocamento	85 Tons	Displacement
Materiale	VTR	Material
Motorizzazione	4 x VOLVO PENTA 1200 IPS 662Kw (900hp)	Propulsion
Combustibile	8500 l	Fuel tank
Acqua dolce	2000 l	Water tank
Velocità di crociera	25 ± 1	Cruising speed
Velocità massima	30 ± 1	Top speed

Consumi / Consumption					
	Velocità nodi Speed Kts	RPM	Consumi l/h Consumption l/h	LPM	Autonomia Autonomy
Cr. Economica Economic cruise	9,1 Kn	900	37	4,07	2088
Crociera Cruising	25,3 Kn	2100	501	19,8	429
Massima Max speed	30,2 Kn	2360	649	21,4	397

amer  
— YACHTS —

amer  100 - 2019

























fly deck



main deck



lower deck

## Dati Tecnici | Technical Data

LOA	29,60 m	LOA
Lunghezza scafo	23,96 m	Length hull
Larghezza massima	7,00 m	Beam
Immersione massima	1,95	Maximum draft
Dislocamento	85 Tons	Displacement
Materiale	VTR	Material
Motorizzazione	4 x VOLVO PENTA 1200 IPS 662Kw (900hp)	Propulsion
Combustibile	8500 l	Fuel tank
Acqua dolce	2000 l	Water tank
Velocità di crociera	25 ± 1	Cruising speed
Velocità massima	30 ± 1	Top speed

Consumi / Consumption					
	Velocità nodi Speed Kts	RPM	Consumi l/h Consumption l/h	LPM	Autonomia Autonomy
Cr. Economica Economic cruise	9,1 Kn	900	37	4,07	2088
Crociera Cruising	25,3 Kn	2100	501	19,8	429
Massima Max speed	30,2 Kn	2360	649	21,4	397

amer  
— YACHTS —

amer 110 - 2017











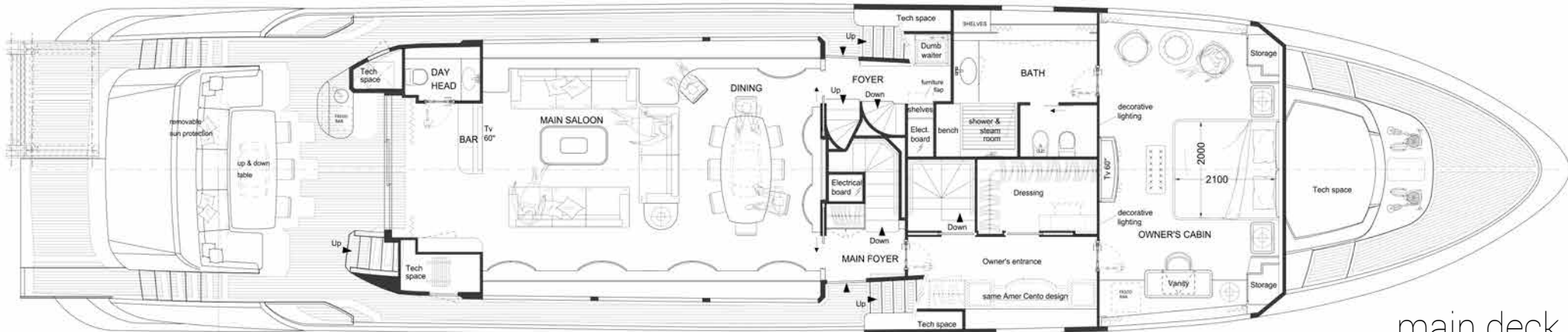




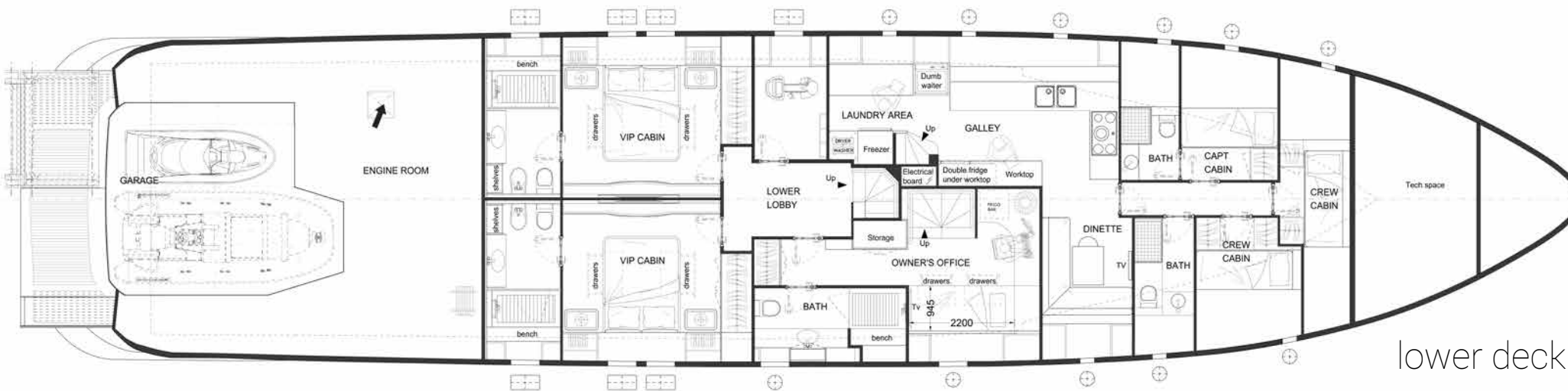




fly deck



main deck



lower deck

## Dati Tecnici | Technical Data

LOA	33,00 m	LOA
Lunghezza scafo	30,50 m	Length hull
Larghezza massima	7,05 m	Max Beam
Materiale	VTR - GRP	Material
Motorizzazione	4 x VOLVO PENTA 1200 IPS 662Kw (900hp)	Propulsion
Immersione massima a pieno carico	1,93 m	Maximum draft fully
Combustibile	10000 l	Fuel tank
Acqua dolce	2000 l	Water tank
Velocità di crociera	25 ± 1	Cruising speed
Velocità massima	30 ± 1	Max speed

Consumi / Consumption					
	Velocità nodi Speed Kts	RPM	Consumi l/h Consumption l/h	LPM	Autonomia Autonomy
Cr. Economica Economic cruise	9 Kn	900	45	5	2000
Crociera Cruising	25,05 Kn	2100	502,5	20	498
Massima Max speed	30 Kn	2330	665	22	451

amer  
— YACHTS —

amer 120-2023













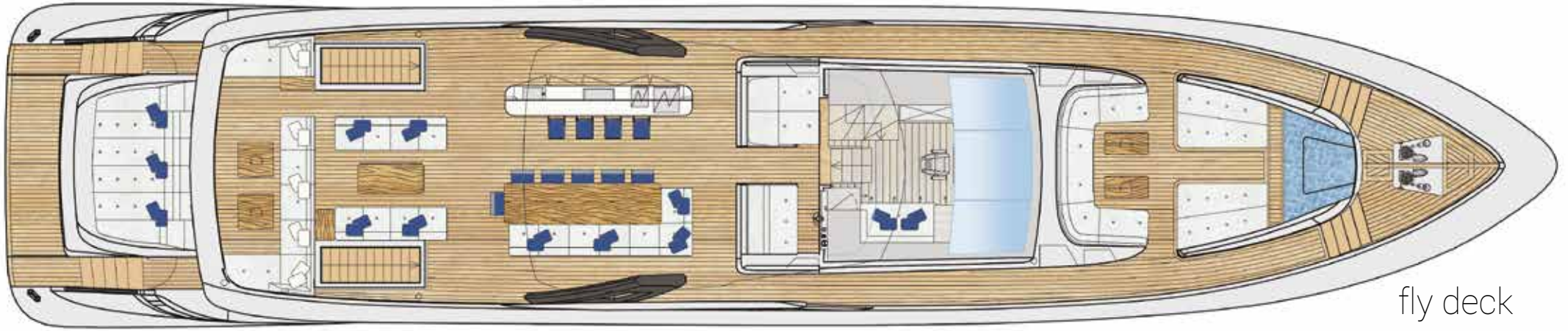




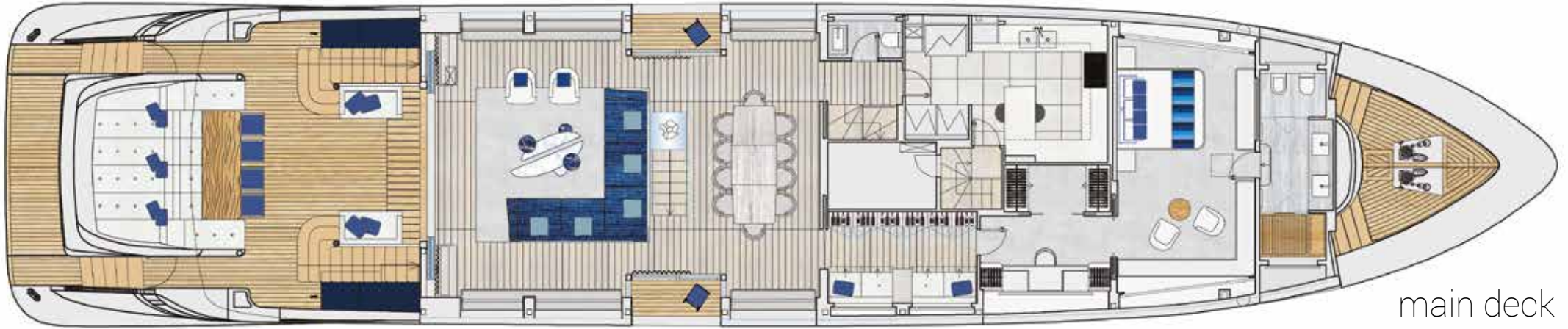




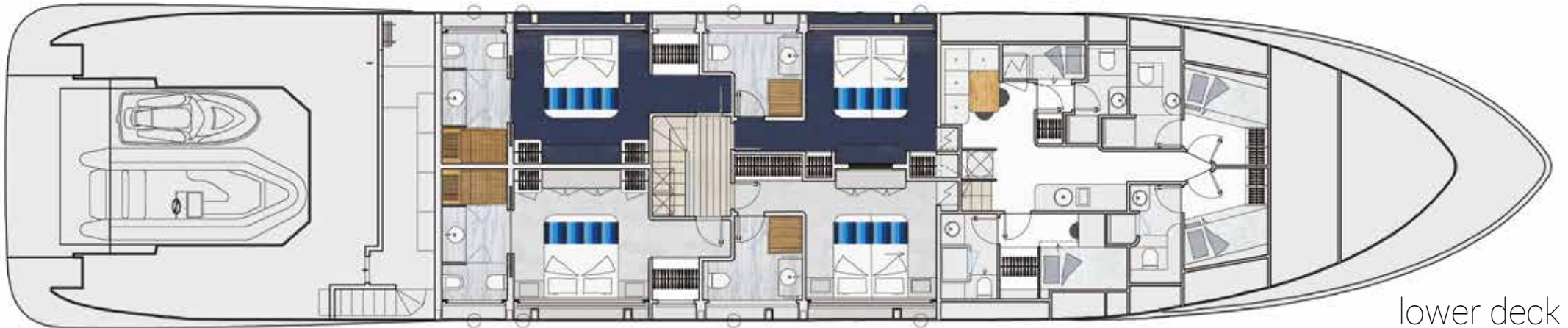




fly deck



main deck



lower deck

## Dati Tecnici | Technical Data

LOA	35,50 m	LOA
Larghezza	7,40 m	Wide
Pescaggio	2,11 m	Draft
Materiale	VTR -GRP	Material
Motorizzazione	4 x VOLVO PENTA 1350 IPS 4 x 1000 hp	Propulsion
Combustibile	12.000 l	Fuel tank
Acqua dolce	3.000 l	Water tank
Velocità di crociera	23±1	Cruising speed
Velocità massima	27±1	Top speed
Dislocamento a pieno carico	150 t	Full displacement - MLDC
Dislocamento a mezzo carico	142 t	MLC
Cantiere	Permare srl	Builder
Designers	EXTERIOR: Ing. Andrea Ramasco	Designers
	INTERIOR: Arch. Stefano Tini	
Ingeniere Navale	Massimo Verme	Naval Architect

amer  
— YACHTS —

amer 120 - 2021





















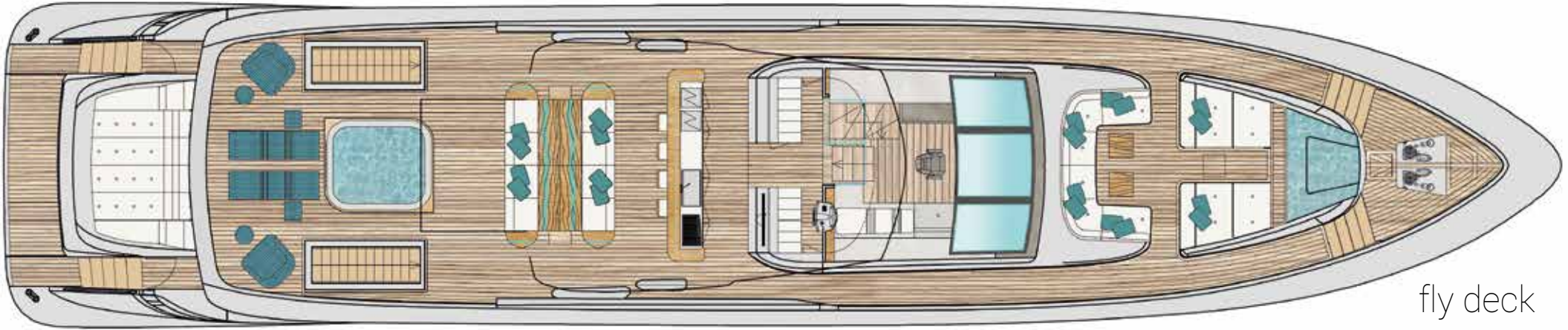












fly deck



main deck



lower deck

## Dati Tecnici | Technical Data

LOA	35,50 m	LOA
Larghezza	7,40 m	Wide
Pescaggio	2,11 m	Draft
Materiale	VTR -GRP	Material
Motorizzazione	4 x VOLVO PENTA 1350 IPS 4 x 1000 hp	Propulsion
Combustibile	12.000 l	Fuel tank
Acqua dolce	3.000 l	Water tank
Velocità di crociera	23±1	Cruising speed
Velocità massima	27±1	Top speed
Dislocamento a pieno carico	150 t	Full displacement - MLDC
Dislocamento a mezzo carico	142 t	MLC
Cantiere	Permare srl	Builder
Designers	EXTERIOR: Ing. Andrea Ramasco	Designers
	INTERIOR: Arch. Stefano Tini	
Ingeniere Navale	Massimo Verme	Naval Architect

amer  
— YACHTS —

[www.ameryachts.com](http://www.ameryachts.com)

amer  
— YACHTS —



[www.ameryachts.it](http://www.ameryachts.it)

permARE

CENTRO NAUTICO PERMARE SRL

Via E. Gavagnin n° 13 • SANREMO 18038 - ITALIA

T. +39 0184 504050

[www.ameryachts.com](http://www.ameryachts.com) • [info@gruppopermare.it](mailto:info@gruppopermare.it)